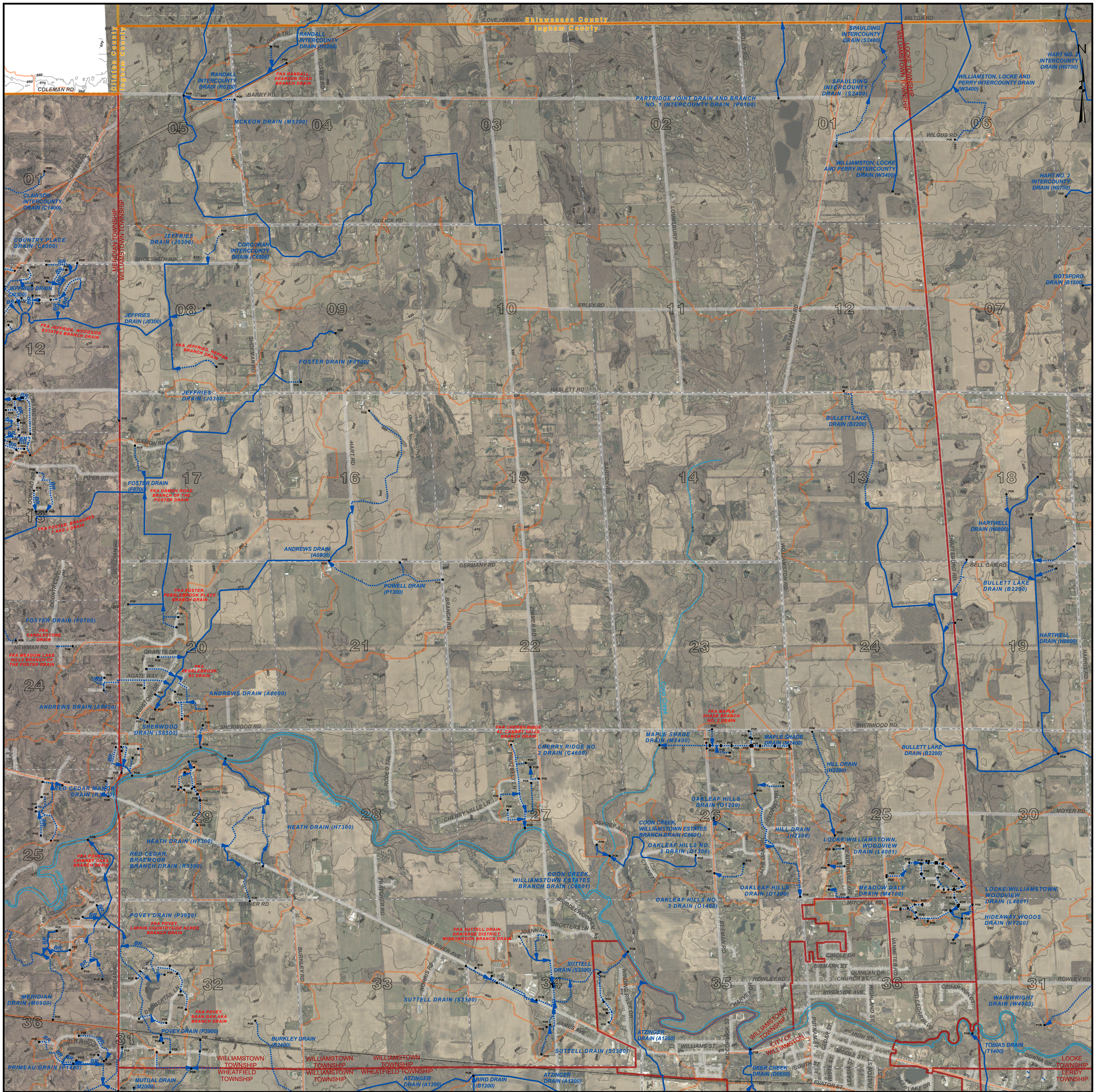


# WILLIAMSTOWN TOWNSHIP, T.4N. - R.2E. , INGHAM COUNTY, MICHIGAN



PATRICK E. LINDEMANN  
INGHAM COUNTY DRAIN COMMISSIONER

**PRELIMINARY**

WILLIAMSTOWN TOWNSHIP DRAIN MAP  
T.4N. - R.2E.  
INGHAM COUNTY, MICHIGAN



LEGEND	
	MUNICIPAL BOUNDARIES
	SECTIONS
	COUNTY
	DRAINAGE DISTRICT BOUNDARIES
	OPEN DRAIN
	CLOSED DRAIN
	ROADS
	RAILROADS
	NATURAL WATERCOURSE
	RED = FORMERLY KNOWN AS

**DISCLAIMER:**

This map is a generalized representation of established drain routes and courses and/or drainage district boundaries. It is provided by the Ingham County Drain Commissioner for reference and display purposes only and does not confirm, create, refute, remove, expand, alter or otherwise affect any rights or obligations recognized or imposed by federal, state or local law, ordinance, regulation or rule.

0 0.25 0.5 1 Miles

1 INCH = 1,000 FEET

DRAIN INDEX			
DRAIN NO	DRAIN NAME	DRAIN NO	DRAIN NAME
A0800	ANDREWS DRAIN	M5200	MCKEON DRAIN
A1200	ATZINGER DRAIN	O1200	OAKLEAF HILLS DRAIN
B2200	BULLETT LAKE DRAIN	O1300	OAKLEAF HILLS NO. 2 DRAIN
B2400	BURKLEY DRAIN	O1400	OAKLEAF HILLS NO. 3 DRAIN
C4600	CHERRY RIDGE NO. 2 DRAIN	P0100	PARTRIDGE JOINT DRAIN AND BRANCH NO. 1 INTERCOUNTY DRAIN
C6500	CORCORAN INTERCOUNTY DRAIN	P1300	POWELL DRAIN
C6601	COON CREEK, WILLIAMSTOWN ESTATES BRANCH DRAIN	P1400	PRIMEAU DRAIN
D0600	DEER CREEK DRAIN	P3900	POVEY DRAIN
F0100	FOSTER DRAIN	P4900	PINE KNOLL ESTATES DRAIN
H2200	HILL DRAIN	R0200	RANDALL INTERCOUNTY DRAIN
H7200	HIDEAWAY WOODS DRAIN	R3200	RED CEDAR MANOR DRAIN
H7300	HEATH DRAIN	S2400	SPAULDING INTERCOUNTY DRAIN
J0300	JEFFRIES DRAIN	S3300	SUTTELL DRAIN
L4001	LOCKE, WILLIAMSTOWN, WOODVIEW DRAIN	S6500	SHERWOOD DRAIN
M2400	MAPLE SHADE DRAIN	T1400	TOBIAS DRAIN
M4700	MEADOW DALE DRAIN	W3400	WILLIAMSTON, LOCKE AND PERRY INTERCOUNTY DRAIN