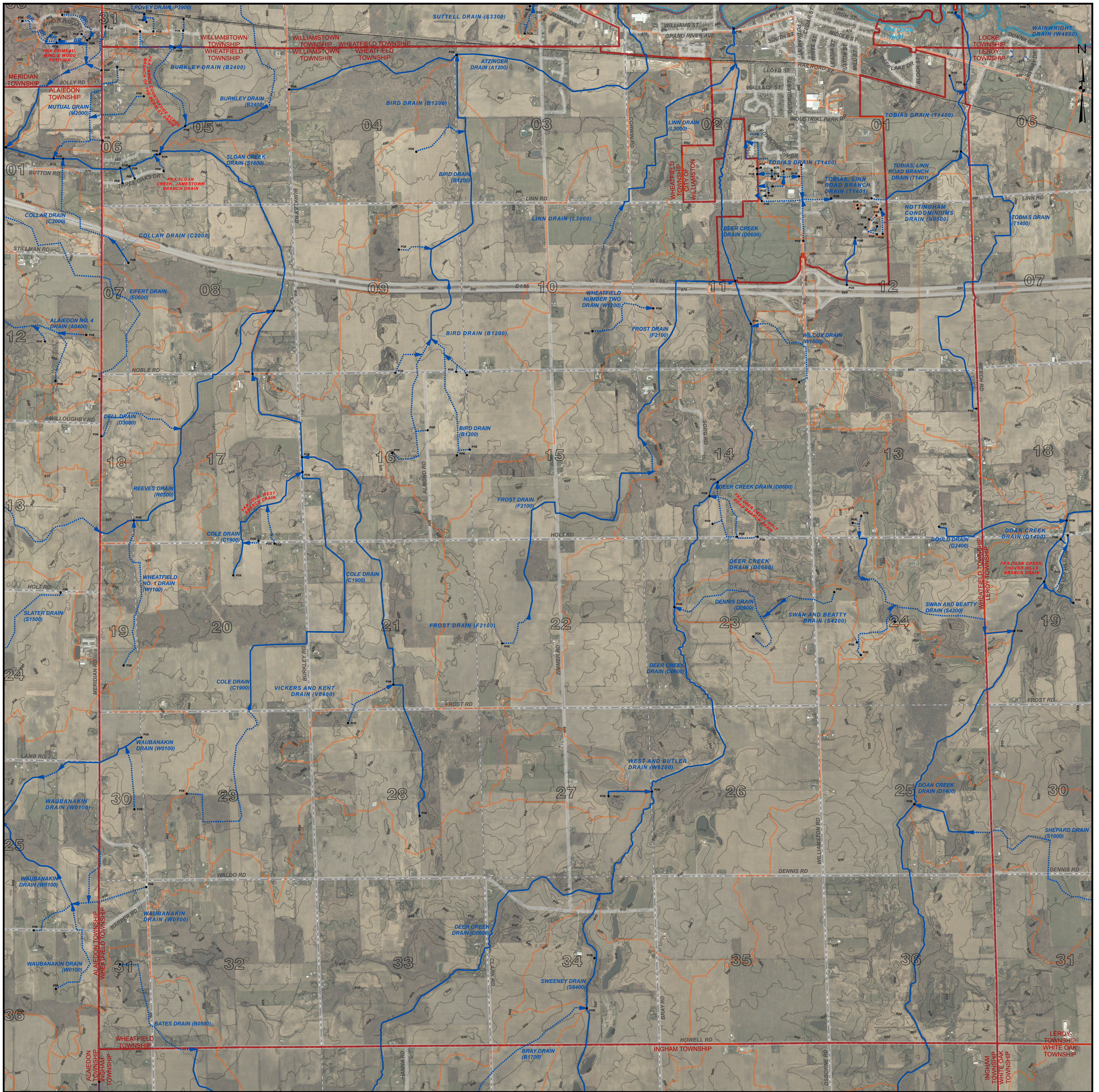


WHEATFIELD TOWNSHIP, T.3N. - R.1E. , INGHAM COUNTY, MICHIGAN



PATRICK E. LINDEMANN
INGHAM COUNTY DRAIN COMMISSIONER

PRELIMINARY

WHEATFIELD TOWNSHIP DRAIN MAP
T.3N. - R.1E.
INGHAM COUNTY, MICHIGAN



LEGEND

- MUNICIPAL BOUNDARIES
- SECTIONS
- COUNTY
- DRAINAGE DISTRICT BOUNDARIES
- OPEN DRAIN
- CLOSED DRAIN
- ROADS
- RAILROADS
- NATURAL WATERCOURSE

RED = FORMERLY KNOWN AS

DISCLAIMER:

This map is a generalized representation of established drain routes and courses and/or drainage district boundaries. It is provided by the Ingham County Drain Commissioner for reference and display purposes only and does not confirm, create, refute, remove, expand, alter or otherwise affect any rights or obligations recognized or imposed by federal, state or local law, ordinance, regulation or rule.

0 0.25 0.5 1 Miles

1 INCH = 1,000 FEET

DRAIN INDEX

DRAIN NO	DRAIN NAME	DRAIN NO	DRAIN NAME
A1200	ATZINGER DRAIN	M2000	MUTUAL DRAIN
B0500	BATES DRAIN	R0500	REEVES DRAIN
B1200	BIRD DRAIN	S1000	SHEPARD DRAIN
B1700	BRAY DRAIN	S1600	SLOAN CREEK DRAIN
B2400	BURKLEY DRAIN	S4200	SWAN AND BEATTY DRAIN
C1900	COLE DRAIN	S6400	SWEENEY DRAIN
C2000	COLLAR DRAIN	T1400	TOBIAS DRAIN
D0600	DEER CREEK DRAIN	T1401	TOBIAS, LINN ROAD BRANCH DRAIN
D0900	DENNIS DRAIN	V0400	VICKERS AND KENT DRAIN
D1400	DOAN CREEK DRAIN	W0100	WAUBANAKIN DRAIN
D3000	DELL DRAIN	W1100	WHEATFIELD NO. 1 DRAIN
E0600	EIFERT DRAIN	W1200	WHEATFIELD NUMBER TWO DRAIN
F2100	FROST DRAIN	W1600	WILCOX DRAIN
G2400	GOULD DRAIN	W6200	WEST AND BUTLER DRAIN
L3000	LINN DRAIN		