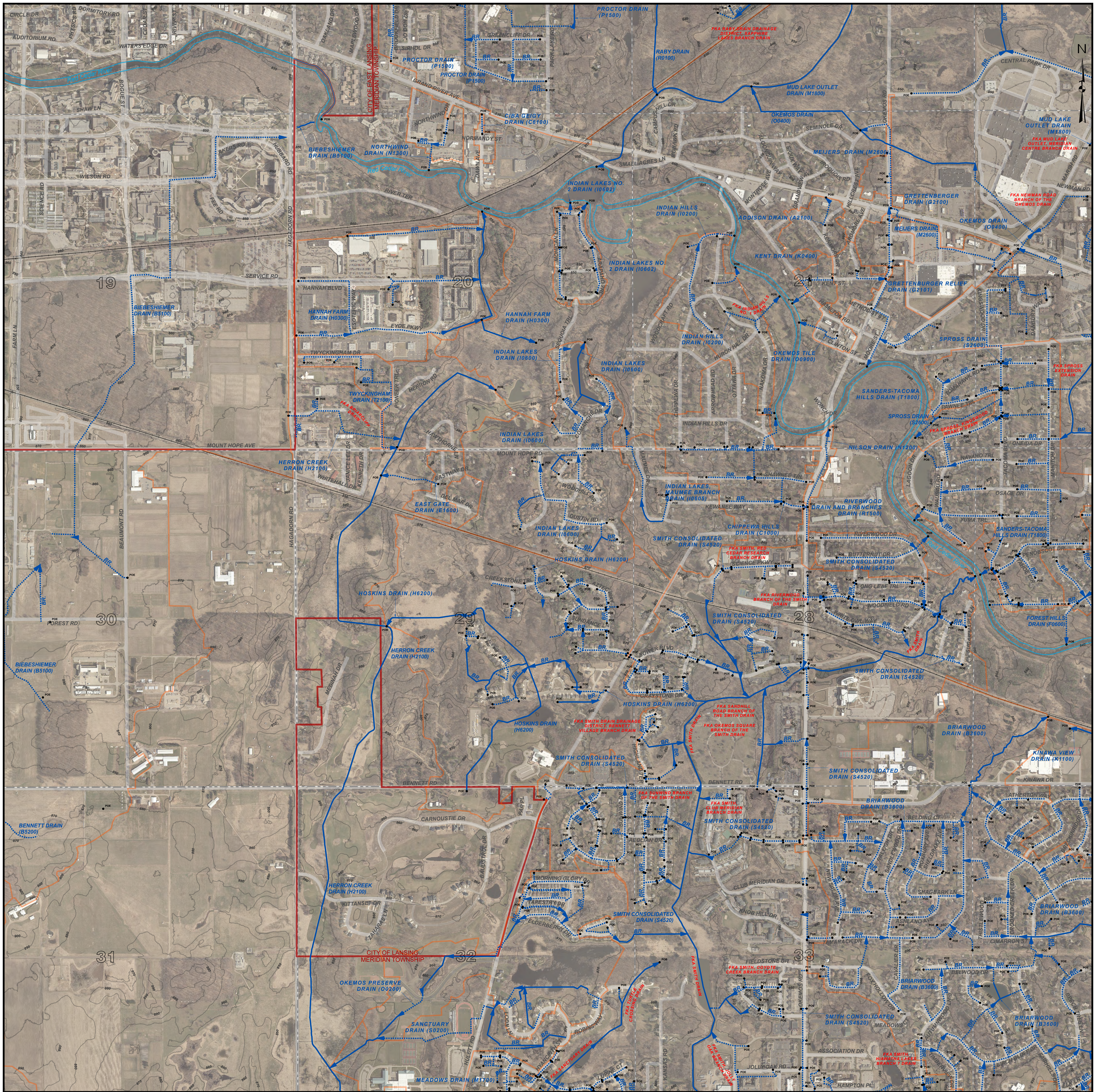


# MERIDIAN TOWNSHIP SW, T.4N. - R.1W. , INGHAM COUNTY, MICHIGAN



PATRICK E. LINDEMANN  
INGHAM COUNTY DRAIN COMMISSIONER

**PRELIMINARY**

MERIDIAN TOWNSHIP SW DRAIN MAP  
T.4N. - R.1W.  
INGHAM COUNTY, MICHIGAN



**LEGEND**

- MUNICIPAL BOUNDARIES
- SECTIONS
- COUNTY
- DRAINAGE DISTRICT BOUNDARIES
- OPEN DRAIN
- CLOSED DRAIN
- ROADS
- RAILROADS
- NATURAL WATERCOURSE

RED = FORMERLY KNOWN AS

**DISCLAIMER:**  
This map is a generalized representation of established drain routes and courses and/or drainage district boundaries. It is provided by the Ingham County Drain Commissioner for reference and display purposes only and does not confirm, create, refute, remove, expand, alter or otherwise affect any rights or obligations recognized or imposed by federal, state or local law, ordinance, regulation or rule.

0 0.13 0.25 0.5 Miles

1 INCH = 500 FEET

**DRAIN INDEX**

DRAIN NO	DRAIN NAME	DRAIN NO	DRAIN NAME	DRAIN NO	DRAIN NAME
A0900	ARMORE DRAIN	G2101	GRETENBURGER RELIEF DRAIN	N1300	NORTHWIND DRAIN
A2100	ADDISON DRAIN	H0300	HANNAH FARM DRAIN	O0200	OKEMOS PRESERVE DRAIN
B2804	BUTTON SPRING LAKES BRANCH DRAIN	H2100	HERRON CREEK DRAIN	O0400	OKEMOS DRAIN
B3600	BRIARWOOD DRAIN	H6200	HOSKINS DRAIN	O0900	OKEMOS TILE DRAIN
B4013	BANTA CONSOLIDATED DRAIN	I0200	INDIAN HILLS DRAIN	P1500	PROCTOR DRAIN
B5100	BIEBESHIEMER DRAIN	I0600	INDIAN LAKES DRAIN	R0100	RABY DRAIN
B5200	BENNETT DRAIN	I0602	INDIAN LAKES NO. 2 DRAIN	R1500	RIVERWOOD DRAIN AND BRANCHES DRAIN
C1000	CHIPPEWA HILLS DRAIN	I0603	INDIAN LAKES MAUMEE BRANCH DRAIN	S0200	SANCTUARY DRAIN
C8100	CIBA GEIGY DRAIN	K0400	KENT DRAIN	S2600	SPROSS DRAIN
D0202	DANIELS EXTENSION DRAIN	K1100	KINAWA VIEW DRAIN	S4520	SMITH CONSOLIDATED DRAIN
E0300	EBERY DRAIN	M1700	MEADOWS DRAIN	S6000	SHAKER HEIGHTS DRAIN
E1600	EAST GATE DRAIN	M1800	MUD LAKE OUTLET DRAIN	T1800	SANDERS-TACOMA HILLS DRAIN
F0900	FOREST HILLS DRAIN	M2900	MELIERS DRAIN	T2100	TWYCKINGHAM DRAIN
G2100	GRETENBURGER DRAIN	N1200	NILSON DRAIN	U0200	UNRUH DRAIN