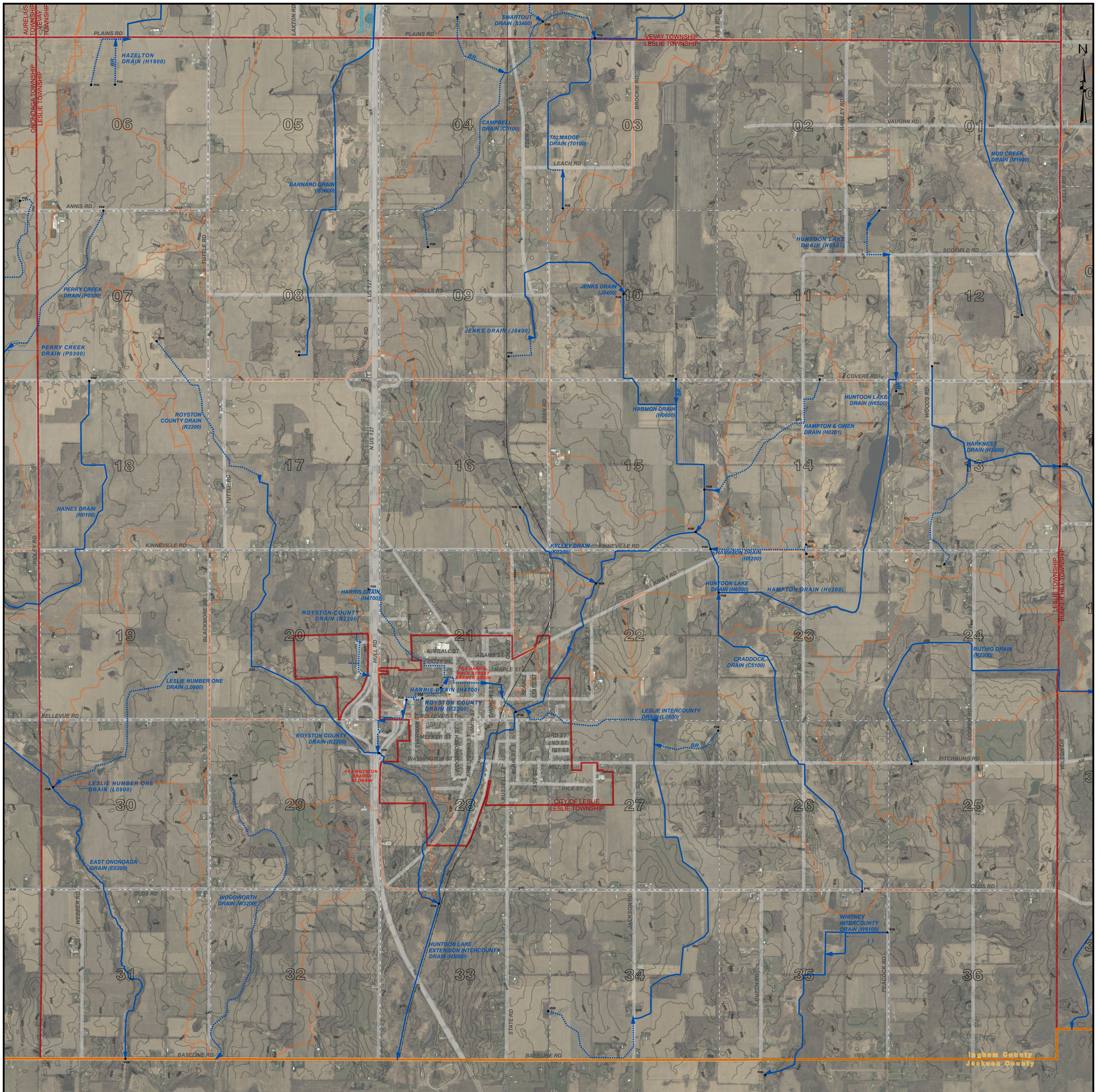


LESLIE TOWNSHIP, T.1N. - R.1W., INGHAM COUNTY, MICHIGAN



PATRICK E. LINDEMANN
INGHAM COUNTY DRAIN COMMISSIONER

PRELIMINARY

LESLIE TOWNSHIP DRAIN MAP
T.1N. - R.1W.
INGHAM COUNTY, MICHIGAN



- LEGEND**
- MUNICIPAL BOUNDARIES
 - SECTIONS
 - COUNTY
 - DRAINAGE DISTRICT BOUNDARIES
 - OPEN DRAIN
 - CLOSED DRAIN
 - ROADS
 - RAILROADS
 - NATURAL WATERCOURSE
- RED = FORMERLY KNOWN AS

DISCLAIMER:

This map is a generalized representation of established drain routes and courses and/or drainage district boundaries. It is provided by the Ingham County Drain Commissioner for reference and display purposes only and does not confirm, create, refute, remove, expand, alter or otherwise affect any rights or obligations recognized or imposed by federal, state or local law, ordinance, regulation or rule.

0 0.25 0.5 1 Miles

1 INCH = 1,000 FEET

DRAIN INDEX

DRAIN NO	DRAIN NAME	DRAIN NO	DRAIN NAME
B3000	BARNARD DRAIN	H6500	HUNTOON LAKE DRAIN
C0100	CAMPBELL DRAIN	J0400	JENKS DRAIN
C5100	CRADDOCK DRAIN	K0200	KELLEY DRAIN
E0200	EAST ONONDAGA DRAIN	L0800	LESLIE INTERCOUNTY DRAIN
F1100	FREEMAN MARSH INTERCOUNTY DRAIN	L0900	LESLIE NUMBER ONE DRAIN
H0100	HAINES DRAIN	M1600	MUD CREEK DRAIN
H0200	HAMPTON DRAIN	P0300	PERRY CREEK DRAIN
H0201	HAMPTON & OWEN DRAIN	R2200	ROYSTON COUNTY DRAIN
H6600	HARMON DRAIN	R2300	RUTHIG DRAIN
H1800	HAZELTON DRAIN	T0100	TALMADGE DRAIN
H3000	HUNTOON LAKE EXTENSION INTERCOUNTY DRAIN	W3200	WOODWORTH DRAIN
H3200	HARKNESS DRAIN	W6100	WHITNEY INTERCOUNTY DRAIN
H4700	HARRIS DRAIN		