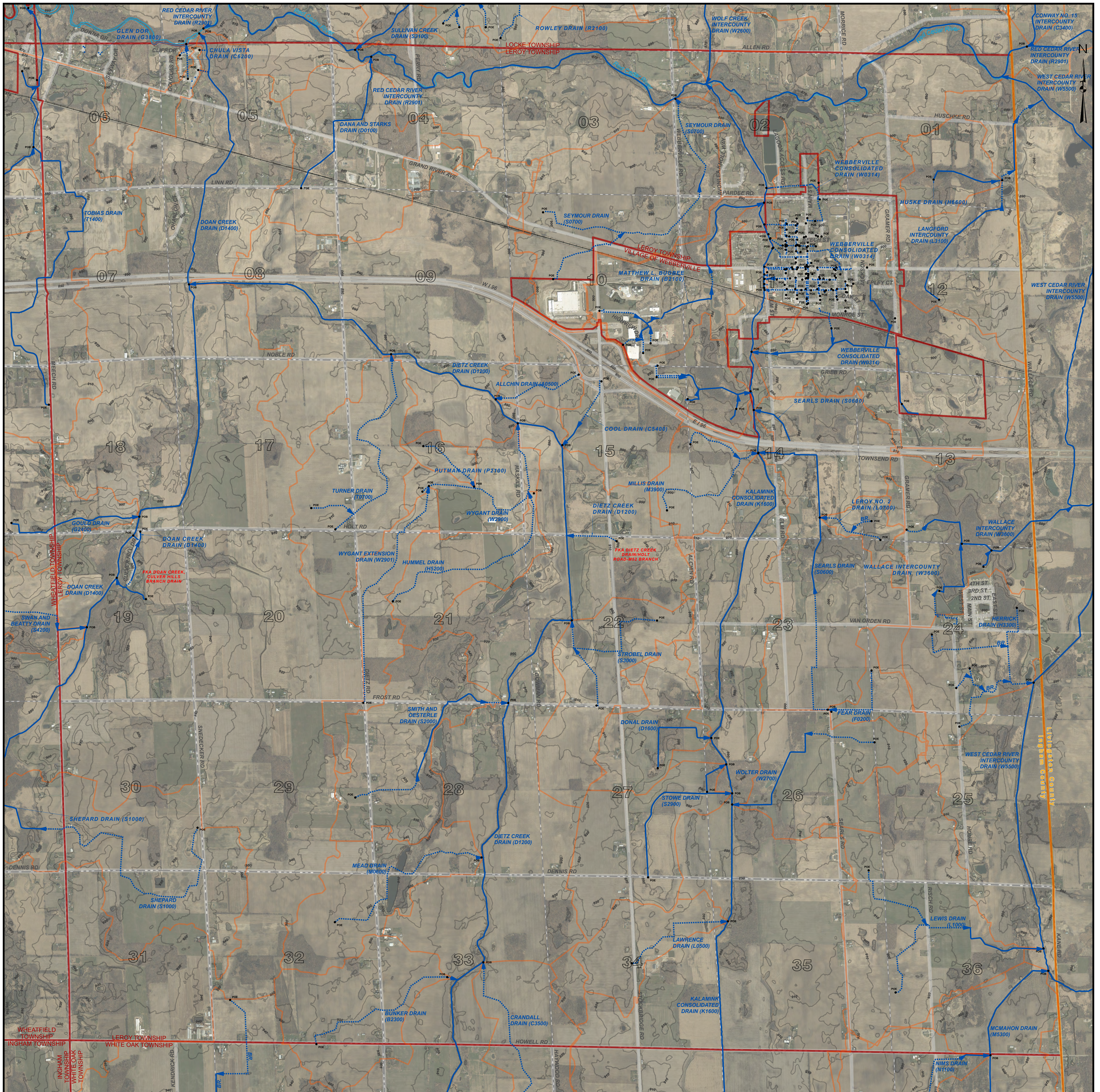


LEROY TOWNSHIP, T.3N. - R.2E. , INGHAM COUNTY, MICHIGAN



PATRICK E. LINDEMANN
INGHAM COUNTY DRAIN COMMISSIONER

PRELIMINARY

LEROY TOWNSHIP DRAIN MAP
T.3N. - R.2E.
INGHAM COUNTY, MICHIGAN



707 BURL AVENUE
P.O. BOX 220
MASON, MI 48854
PHONE: (517)-676-8395
FAX: (517)-676-8364

LEGEND	
	MUNICIPAL BOUNDARIES
	SECTIONS
	COUNTY
	DRAINAGE DISTRICT BOUNDARIES
	OPEN DRAIN
	CLOSED DRAIN
	ROADS
	RAILROADS
	NATURAL WATERCOURSE
	RED = FORMERLY KNOWN AS

DISCLAIMER:

This map is a generalized representation of established drain routes and courses and/or drainage district boundaries. It is provided by the Ingham County Drain Commissioner for reference and display purposes only and does not confirm, create, refute, remove, expand, alter or otherwise affect any rights or obligations recognized or imposed by federal, state or local law, ordinance, regulation or rule.

0 0.25 0.5 Miles

1 INCH = 1,000 FEET

DRAIN INDEX			
DRAIN NO	DRAIN NAME	DRAIN NO	DRAIN NAME
A5500	ALLCHIN DRAIN	S1000	SHEPARD DRAIN
B2100	MATHEW L. BUGREE DRAIN	S2000	SMITH AND OESTERLE DRAIN
B2300	BUNKER DRAIN	S2600	STOWE DRAIN
C3500	CRANDALL DRAIN	S3000	STROBEL DRAIN
C5400	COOL DRAIN	S3100	SULLIVAN CREEK DRAIN
C6200	CHULA VISTA DRAIN	S4200	SWAN AND BEATTY DRAIN
D0100	DANA AND STARKS DRAIN	T0700	TURNER DRAIN
D1200	DIETZ CREEK DRAIN	T1400	TOBIAS DRAIN
D1400	DOAN CREEK DRAIN	W0314	WEBBERVILLE CONSOLIDATED DRAIN
D1600	DONAL DRAIN	W2500	WOLF CREEK INTERCOUNTY DRAIN
F0200	FEAR DRAIN	W2700	WOLTER DRAIN
G2400	GOULD DRAIN	W2900	WYGANT DRAIN
G3800	GLEN DOR DRAIN	R2901	RED CEDAR RIVER INTERCOUNTY DRAIN
H3300	HERRICK DRAIN	S0600	SEARLS DRAIN
H5200	HUMMEL DRAIN	S0700	SEYMOUR DRAIN
H0600	HUSKE DRAIN	S2000	SMITH AND OESTERLE DRAIN
K1600	KALAMINK CONSOLIDATED DRAIN	S2600	STOWE DRAIN
L0500	LAWRENCE DRAIN	S3000	STROBEL DRAIN
L0700	LEROY NO. 2 DRAIN	S3100	SULLIVAN CREEK DRAIN
L1000	LEWIS DRAIN	S4200	SWAN AND BEATTY DRAIN
L3100	LANGFORD INTERCOUNTY DRAIN	T0700	TURNER DRAIN
M0500	MARSHALL AND WILCOX DRAIN	T1400	TOBIAS DRAIN
M0600	MEAD DRAIN	W0314	WEBBERVILLE CONSOLIDATED DRAIN
M3900	MILLIS DRAIN	W2500	WOLF CREEK INTERCOUNTY DRAIN
M5300	MCMAHON DRAIN	W2700	WOLTER DRAIN
P2100	PUTMAN DRAIN	W2900	WYGANT DRAIN
R2901	RED CEDAR RIVER INTERCOUNTY DRAIN	W2901	WYGANT EXTENSION DRAIN
S0600	SEARLS DRAIN	W3600	WALLACE INTERCOUNTY DRAIN
S0700	SEYMOUR DRAIN	W5500	WEST CEDAR RIVER INTERCOUNTY DRAIN