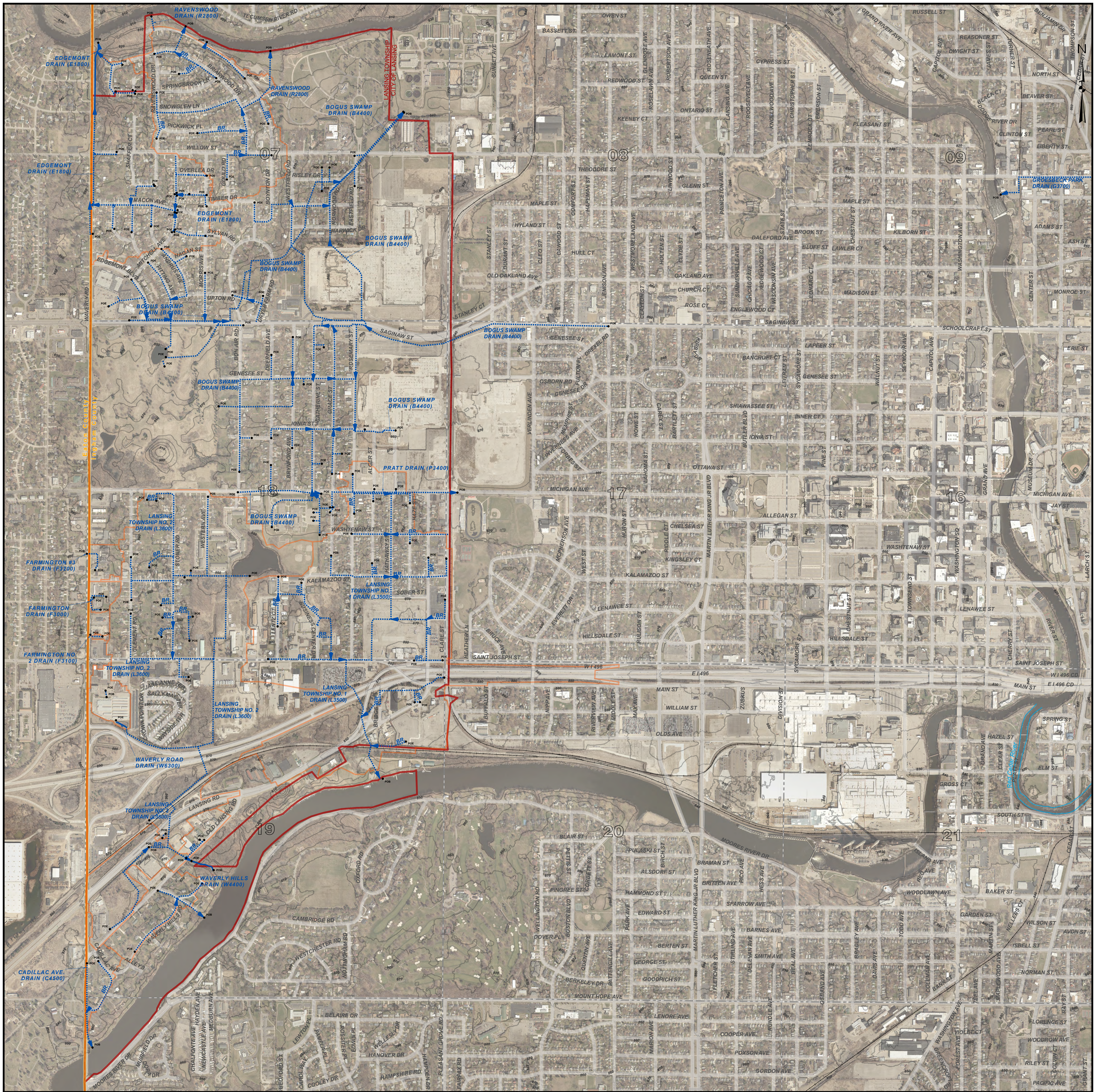


LANSING TOWNSHIP W, T.4N. - R.2W. , INGHAM COUNTY, MICHIGAN



PATRICK E. LINDEMANN
INGHAM COUNTY DRAIN COMMISSIONER

PRELIMINARY

LANSING TOWNSHIP W DRAIN MAP
T.4N. - R.2W.
INGHAM COUNTY, MICHIGAN



LEGEND

- MUNICIPAL BOUNDARIES
- SECTIONS
- COUNTY
- DRAINAGE DISTRICT BOUNDARIES
- OPEN DRAIN
- CLOSED DRAIN
- ROADS
- RAILROADS
- NATURAL WATERCOURSE

RED = FORMERLY KNOWN AS

DISCLAIMER:

This map is a generalized representation of established drain routes and courses and/or drainage district boundaries. It is provided by the Ingham County Drain Commissioner for reference and display purposes only and does not confirm, create, refute, remove, expand, alter or otherwise affect any rights or obligations recognized or imposed by federal, state or local law, ordinance, regulation or rule.

0 0.13 0.25 0.5 Miles

1 INCH = 500 FEET

DRAIN INDEX

DRAIN NO	DRAIN NAME
B440	BOGUS SWAMP DRAIN
C4500	CADILLAC AVE. DRAIN
E1800	EDGEMONT DRAIN
F3000	FARMINGTON DRAIN
F3100	FARMINGTON NO. 2 DRAIN
F3200	FARMINGTON #3 DRAIN
G3700	GROESBECK PARK DRAIN
L3500	LANSING TOWNSHIP NO. 1 DRAIN
L3600	LANSING TOWNSHIP NO. 2 DRAIN
L3601	LANSING TOWNSHIP NO. 2 SCHULTZ BRANCH DRAIN
L3602	LANSING TWP #2 LANSING/WAVERLY ROAD BRANCH DRAIN
P3400	PRATT DRAIN
R2800	RAVENSWOOD DRAIN
W4400	WAVERLY HILLS DRAIN
W6300	WAVERLY ROAD DRAIN