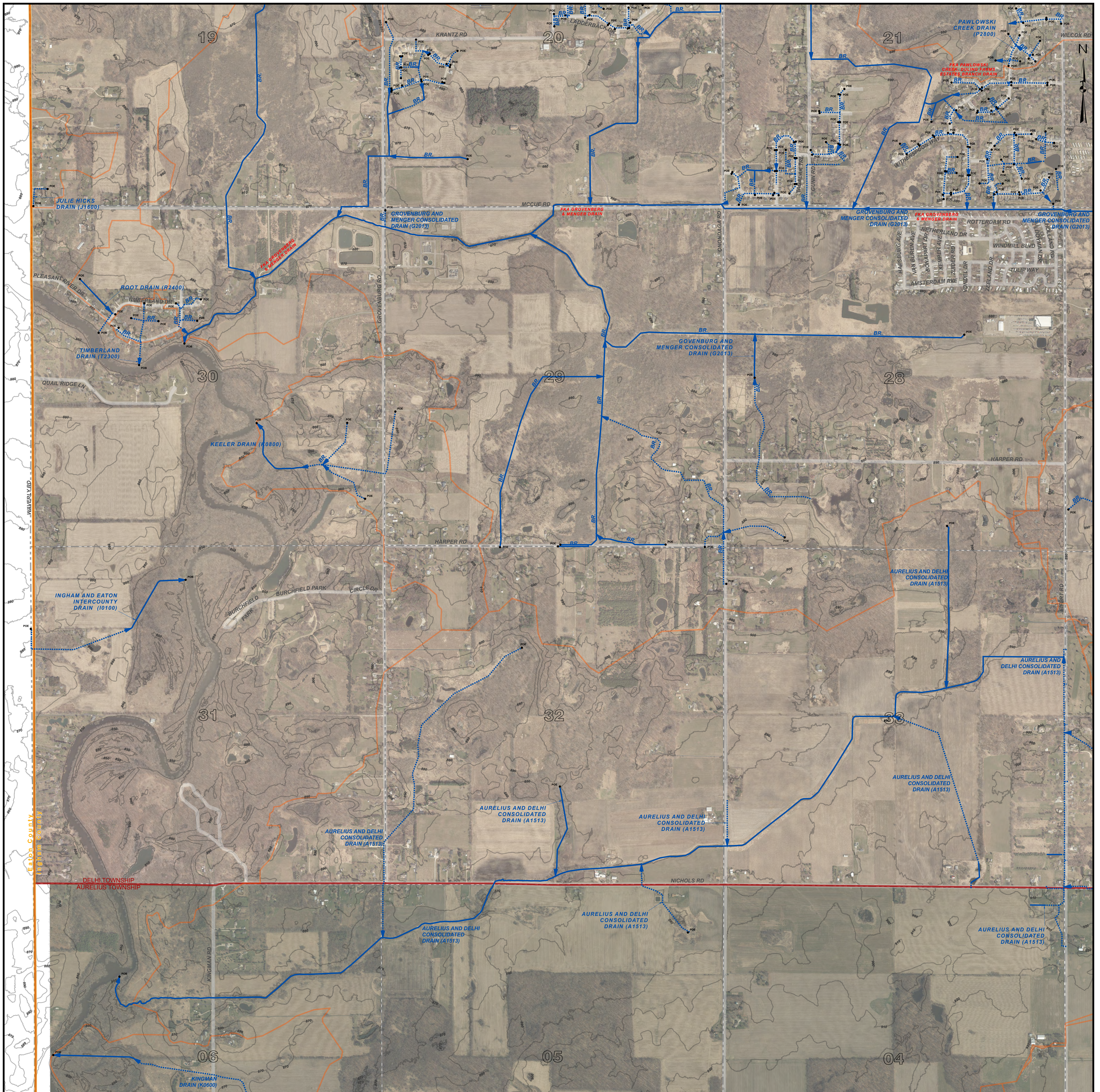


DELHI TOWNSHIP SW, T.4N. - R.2W. , INGHAM COUNTY, MICHIGAN



PATRICK E. LINDEMANN
INGHAM COUNTY DRAIN COMMISSIONER

PRELIMINARY

DELHI TOWNSHIP SW DRAIN MAP
T.4N. - R.2W.
INGHAM COUNTY, MICHIGAN



LEGEND

	MUNICIPAL BOUNDARIES
	SECTIONS
	COUNTY
	DRAINAGE DISTRICT BOUNDARIES
—	OPEN DRAIN
- - -	CLOSED DRAIN
—	ROADS
—	RAILROADS
—	NATURAL WATERCOURSE

RED = FORMERLY KNOWN AS

DISCLAIMER:

This map is a generalized representation of established drain routes and courses and/or drainage district boundaries. It is provided by the Ingham County Drain Commissioner for reference and display purposes only and does not confirm, create, refute, remove, expand, alter or otherwise affect any rights or obligations recognized or imposed by federal, state or local law, ordinance, regulation or rule.

0 0.13 0.25 0.5 Miles

1 INCH = 500 FEET

DRAIN INDEX

DRAIN NO	DRAIN NAME
A1513	AURELIUS AND DELHI CONSOLIDATED DRAIN
G2013	GROVENBURG AND MENGER CONSOLIDATED DRAIN
0100	INGHAM AND EATON INTERCOUNTY DRAIN
K0800	KEELER DRAIN
R2400	ROOT DRAIN
T2300	TIMBERLAND DRAIN