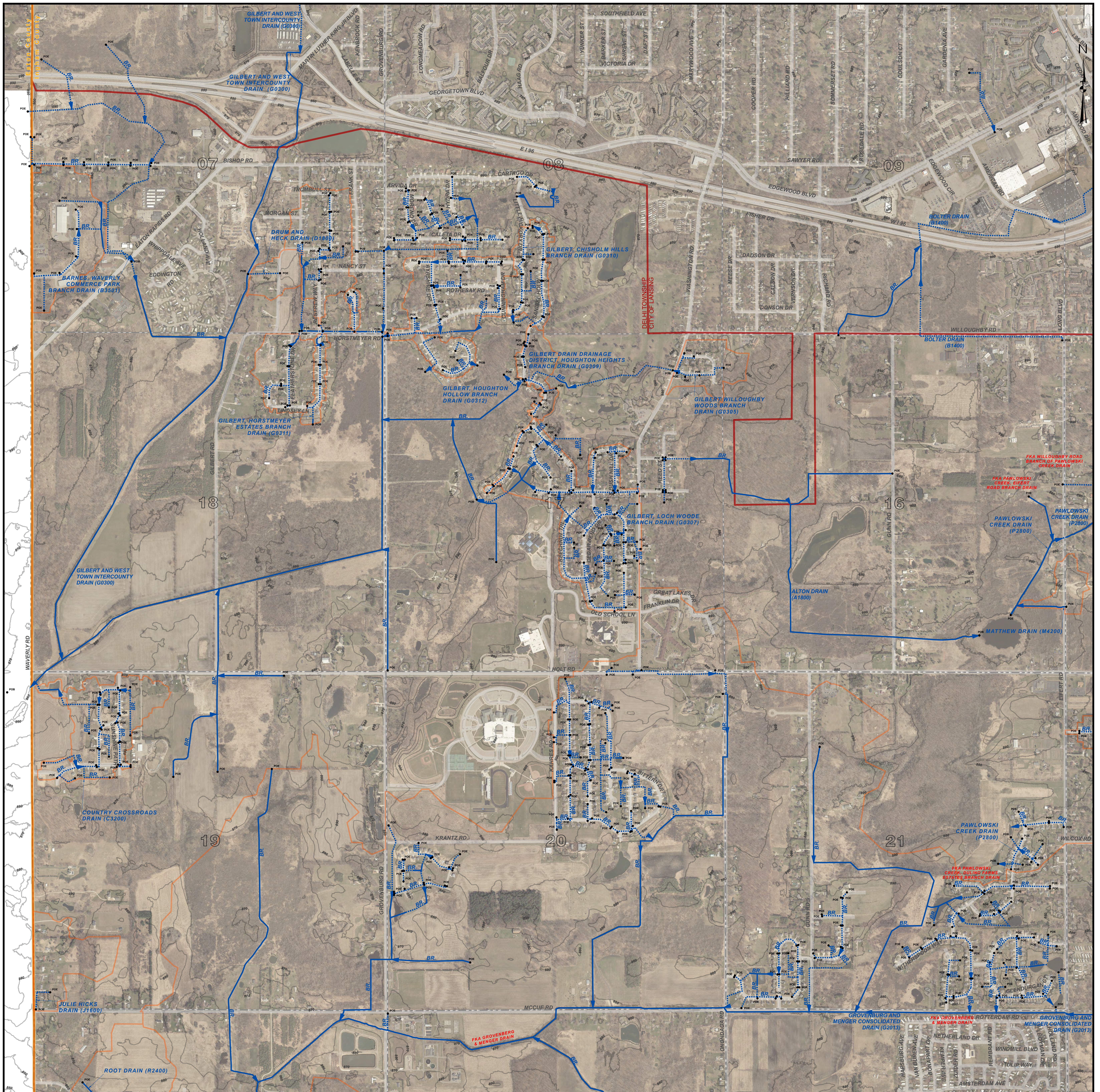


DELHI TOWNSHIP NW, T.4N. - R.2W. , INGHAM COUNTY, MICHIGAN



PATRICK E. LINDEMANN
INGHAM COUNTY DRAIN COMMISSIONER

PRELIMINARY

DELHI TOWNSHIP NW DRAIN MAP
T.4N. - R.2W.
INGHAM COUNTY, MICHIGAN



LEGEND

- MUNICIPAL BOUNDARIES
- SECTIONS
- COUNTY
- DRAINAGE DISTRICT BOUNDARIES
- OPEN DRAIN
- CLOSED DRAIN
- ROADS
- RAILROADS
- NATURAL WATERCOURSE

RED = FORMERLY KNOWN AS

DISCLAIMER:

This map is a generalized representation of established drain routes and courses and/or drainage district boundaries. It is provided by the Ingham County Drain Commissioner for reference and display purposes only and does not confirm, create, refute, remove, expand, alter or otherwise affect any rights or obligations recognized or imposed by federal, state or local law, ordinance, regulation or rule.

0 0.13 0.25 0.5 Miles

1 INCH = 500 FEET

DRAIN INDEX

DRAIN NO	DRAIN NAME	DRAIN NO	DRAIN NAME
A1800	ALTON DRAIN	G0308	GILBERT, CARDINAL BRANCH DRAIN
B1400	BOLTER DRAIN	G0309	GILBERT DRAIN DRAINAGE DISTRICT, HOUGHTON HEIGHTS BRANCH DRAIN
B3501	BARNES, WAVERLY COMMERCE PARK BRANCH DRAIN	G0310	GILBERT, CHISHOLM HILLS BRANCH DRAIN
C3200	COUNTRY CROSSROADS DRAIN	G0311	GILBERT, HORSTMAYER ESTATES BRANCH DRAIN
D1800	DRUM AND HECK DRAIN	G0312	GILBERT, HOUGHTON HOLLOW BRANCH DRAIN
G0300	GILBERT AND WEST TOWN INTERCOUNTY DRAIN	G2013	GROVENBURG AND MENDER CONSOLIDATED DRAIN
G0302	GILBERT GLENS BRANCH NO. 1 AND 2 OF THE NORTH BRANCH OF THE GILBERT DRAIN	J1600	JULIE HICKS DRAIN
G0303	LAVIER BRANCH OF NORTH BRANCH OF GILBERT DRAIN	M0700	MELKVIK DRAIN
G0305	GILBERT WILLOUGHBY WOODS BRANCH DRAIN	M0701	GROVENBURG FARMS BRANCH OF THE MELKVIK DRAIN
G0306	GILBERT, GROVENBURG WOODS BRANCH DRAIN	M4200	MATTHEW DRAIN
G0307	GILBERT, LOCH WOODS BRANCH DRAIN	P2800	PAWLOWSKI CREEK DRAIN