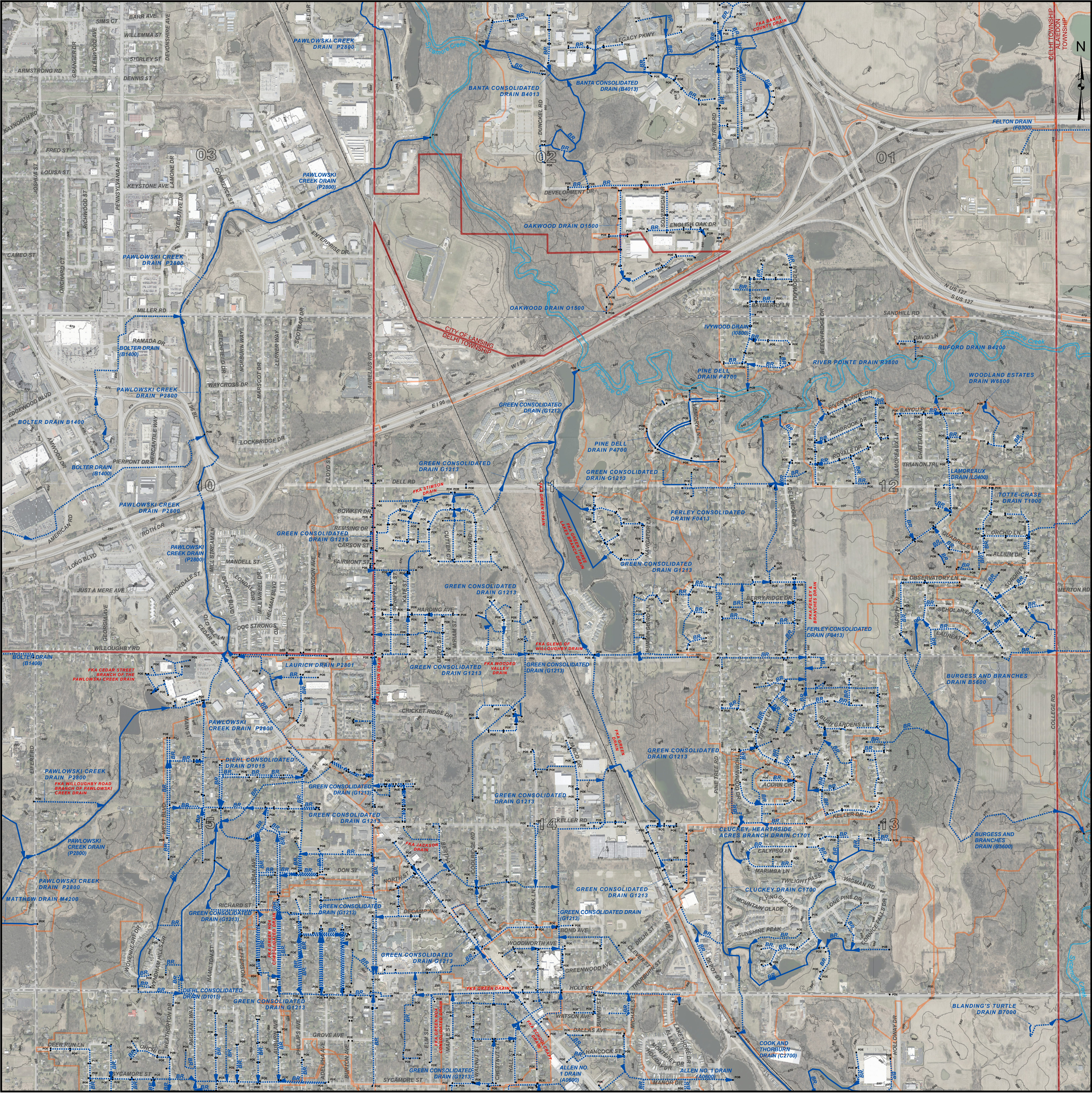


DELHI TOWNSHIP NE, T.4N. - R.2W. , INGHAM COUNTY, MICHIGAN



PATRICK E. LINDEMANN
INGHAM COUNTY DRAIN COMMISSIONER

PRELIMINARY

DELHI TOWNSHIP NE DRAIN MAP
T.4N. - R.2W.
INGHAM COUNTY, MICHIGAN



- LEGEND**
- MUNICIPAL BOUNDARIES
 - SECTIONS
 - COUNTY
 - DRAINAGE DISTRICT BOUNDARIES
 - OTHER INTERCOUNTY DISTRICT BOUNDARIES
 - OPEN DRAIN
 - CLOSED DRAIN
 - ROADS
 - RAILROADS
 - NATURAL WATERCOURSE
 - RED = FORMERLY KNOWN AS

DISCLAIMER:

This map is a generalized representation of established drain routes and courses and/or drainage district boundaries. It is provided by the Ingham County Drain Commissioner for reference and display purposes only and does not confirm, create, refute, remove, expand, alter or otherwise affect any rights or obligations recognized or imposed by federal, state or local law, ordinance, regulation or rule.

0 0.13 0.25 0.5 Miles

1 INCH = 500 FEET

DRAIN INDEX	
Drain No.	Drain Name
A0600	ALLEN NO. 1 DRAIN
B4013	BANTA CONSOLIDATED DRAIN
B4200	BUFORD DRAIN
B5600	BURGESS AND BRANCHES DRAIN
C1700	CLUCKEY DRAIN
C1701	CLUCKEY, HEARTSIDE ACRES BRANCH DRAIN
C2700	COOK AND THORBURN DRAIN
C6400	COLLEGE HEIGHTS DRAIN
D1015	DIHEL CONSOLIDATED DRAIN
F0300	FELTON DRAIN
F0413	FERLEY CONSOLIDATED DRAIN
G1213	GREEN CONSOLIDATED DRAIN
I0800	IVYWOOD DRAIN
L0400	LAMOREAUX DRAIN
M4200	MATTHEW DRAIN
O1500	OAKWOOD DRAIN
P2800	PAWLOWSKI CREEK DRAIN
P2801	LAURICH DRAIN
P4700	PINE DELL DRAIN
R3800	RIVER POINTE DRAIN
S3200	SUMMITT STREET DRAIN
T1000	TOTTIE-CHASE DRAIN
W6800	WOODLAND ESTATES DRAIN